

# Choosing quality childcare



## Quality childcare helps children to:

- build their confidence and curiosity
- make friends and learn to share
- develop their language skills
- experience new activities
- develop their physical skills
- become independent and get ready for school

### Finding a childcare provider

You can choose from:

- pre-schools and playgroups
- childminders
- day nurseries

For further considerations on the types of childcare on offer, please visit [www.leicestershire.gov.uk/find-a-childcare-provider](http://www.leicestershire.gov.uk/find-a-childcare-provider)



Childcare providers are registered with Ofsted who gives them one of four quality grades:

- outstanding
- good
- requires improvement
- inadequate

### How do I choose?

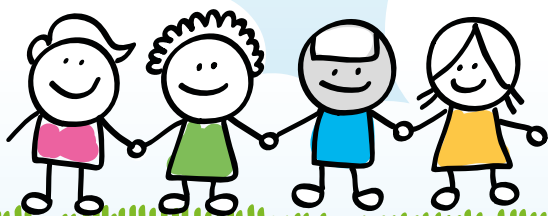
Things to consider when choosing quality childcare:

- can children be active and play freely?
- are activities fun and inviting?
- do children look happy and involved in their learning?
- are all children included and welcomed?
- are there a range of resources that reflect my child's culture, heritage and identity?
- are the adults playing with the children?
- do you think your child would be safe, well cared for and happy here?
- is the Ofsted report available to view?



### Did you know?

You could be eligible for up to 30 hours of funded childcare. To find out more visit [www.childcarechoices.gov.uk](http://www.childcarechoices.gov.uk)





## What might I need to find out?

You will need to feel happy and confident about your childcare choice. It is good to ask questions. Here are some ideas:

- who will be caring for my child?
- how do I know my child will be safe?
- how will they know what my child wants/needs?
- will they listen to them and let them make choices?
- how do I find out about my child's day?
- what happens if my child doesn't settle, is ill or has an accident?
- how will my child be supported if they have special educational needs or disabilities?

## Choosing childcare for children with special educational needs and disabilities

- These considerations may help you to decide which is the best childcare for your child
- The provisions that are available and the size of the provision
- What is their accessibility
- What changing facilities or accessible toilets are there in the provision
- If your child may need 1:1, will this be a consistent person or on a rota for a group of adults?

## What do other parents and families say?

Funding has supported me to get back to work and helps with the cost of childcare.

My two year old daughter has some additional needs. Since attending nursery her physical and communication development has progressed beyond what I thought possible. I am really pleased with the way the nursery has worked with us and supported us as a family.

My son has grown in confidence since he started nursery. He has now made good progress in all areas of his development including his speech and language. He is ready for and is looking forward to starting school because the nursery arranged extra visits to his new class to help him settle in. I am glad we took up the offer of a funded nursery place.

For support from your local family hub:  
[www.familyhubsleicestershire.org.uk](http://www.familyhubsleicestershire.org.uk)



For information about funded childcare:  
[www.leicestershire.gov.uk/funded-childcare-places](http://www.leicestershire.gov.uk/funded-childcare-places)

